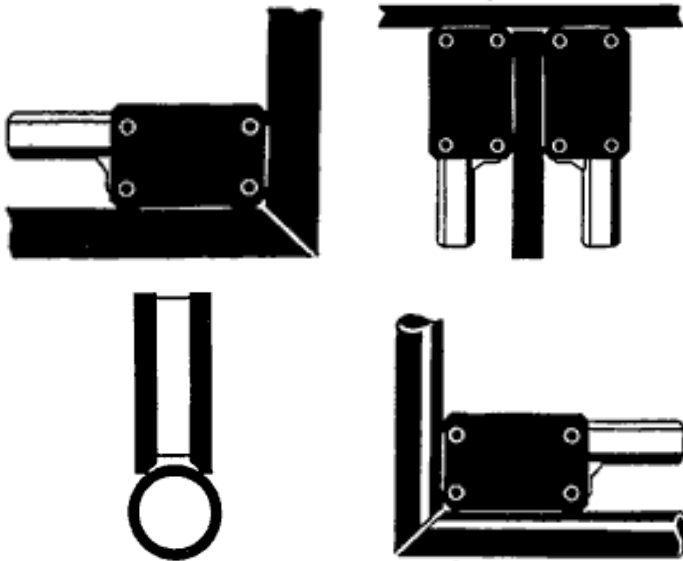




A.NARDUCCI

MAGNETIC CLAMPS

105x70



The bearing is studied to be adapted both to flat surfaces and to round surfaces.

Due to a strong overhang pole, the set "magnet" is permanent.

The rectangular shape allows it to be used as clamp on more sides.

Force [kg]: 110 – 120 kg

The locking of the cable is quick and safe.
The cable connection to the workpiece allows a direct current flow.
No damage to magnetic field.

Welding cable: 50 – 70 mm²

