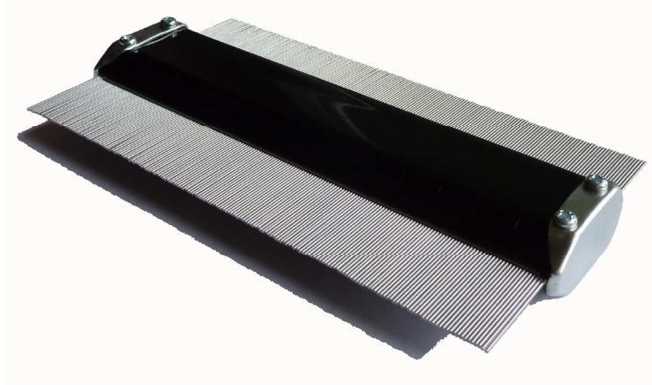




# A.NARDUCCI

WELDING PRODUCTS

## COMB GAUGE Mod. G150



Professional comb gauge with metal black-painted body and with steel needles, it allows you to take the profile of objects and draw it.

It is compound by blades, which are disposed into a guide to slide in a constant plane. Press the gauge perpendicularly to the flat weld or to shaped parts: the lamellas arrange themselves according to the shape of the object profile. In this way the profile can be reproduced, also by a simple bidimensional tracing.

### FEATURES

*maximum length* : 150 mm

*depth* : 50 mm

*body*: metal, graduated

